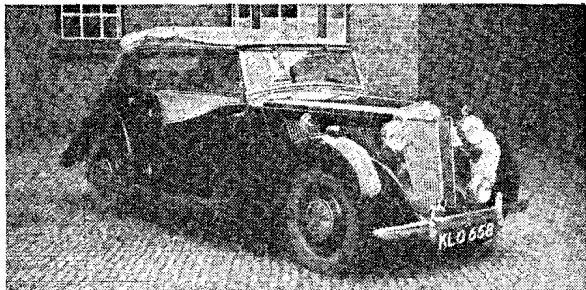


Chiltern Cars

11a Water Lane, LEIGHTON BUZZARD
Bedfordshire. Tel.: Leighton Buzzard 2060



1949 M.G. 1½-litre Y-type tourer. This attractive open 4-seater was produced in very limited numbers and is seldom seen on the road. The Works-reconditioned engine has covered 12,000 miles. Finished in black with red leather upholstery. Excellent throughout. **£375.**

COOPER-FORD. A potent 1,172 contender with Aquaplaned engine, Cooper frame and i.f.s. The final drive is by a 4.7 : 1 Ford axle coupled to the Cooper transverse spring and located by Panhard rod. The bodywork is sound but unhandsome, and it really deserves a good fibreglass body. **£195.**
M.G. "Cream-Cracker" P-type 2-seater, fitted with a PB engine. Originally supercharged but now fitted with twin S.U.s. Just decarbonised and fitted with new valves and springs. Cylinder bores unworn. **£175.**
M.G. TA-type 2-seater, registered ABL 962, identified by the M.G. Car Company as one of the 1937 T series "Cream-Cracker" team. Original and attractive condition. 16-in. rear wheels. Very fast. **£225.**

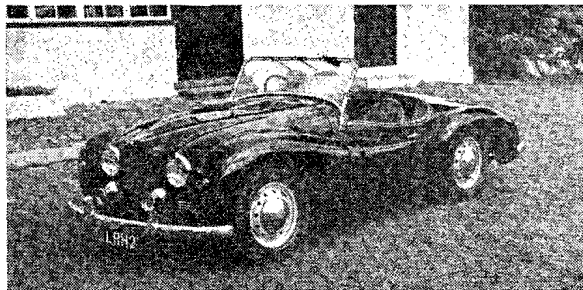
LAGONDA Rapier 1,100-c.c. sports 2-seater. A pretty little car in very sound condition throughout, having done only 8,000 miles since comprehensive overhaul. Bills available. **£175.**

1929 LEA-FRANCIS 12/40 wide-track 2-seater with dickey. Exceptionally good mechanically. **£85.**

AUSFORD Special 2-seater. First registered June 1950. Morris Eight engine and gearbox. Excellent running order, but somewhat stark. To clear, **£47 10s.**

EASY TERMS

WE ARE INTERESTED IN PURCHASING MOST TYPES OF BRITISH AND CONTINENTAL SPORTS CARS IN GOOD CONDITION. IF YOU HAVE A CAR OF THIS TYPE FOR DISPOSAL, WHY NOT CONTACT US?



1951 JOWETT Jupiter. A very well-cared-for example of this much-sought-after, high-performance, 1½-litre 2-seater. The engine has done only a nominal mileage since a new crankshaft and bearings were fitted (bills available) and still requires running-in. **£395.**

BENTLEY short-chassis **Red Label** Speed Model open 4-seater. Fitted with 4½-litre engine which has been sleeved to standard. Magnetos and carburetters overhauled. Fitted new hood and sidescreens and recellulosed in B.R.G. A fast and attractive car. **£275.**

ASTON MARTIN 1½-litre Bertelli fixed-head sportsman's coupe. Completely rebuilt in 1953 and now in magnificent condition. Undoubtedly one of the most attractive Astons of its type ever made. **£295.**

RILEY 1½-litre six-light **Kestrel** sports saloon. Finished in original light grey with blue leather upholstery. An attractive and very well-maintained car. **£225.**

1957 (Aug.) MORRIS Minor 1000 de luxe 2-door saloon. Dark green. 3,000 miles only and as new throughout. Fitted with seat covers. Would exchange for good T.R.2 with overdrive.

1938 FRAZER-NASH "Chain Gang" 2-seater, fitted with 2-litre Type 55 B.M.W. engine, new bevels, brakes relined. Vivid performance. Excellent condition. **£265.**

EXCHANGES WELCOMED